

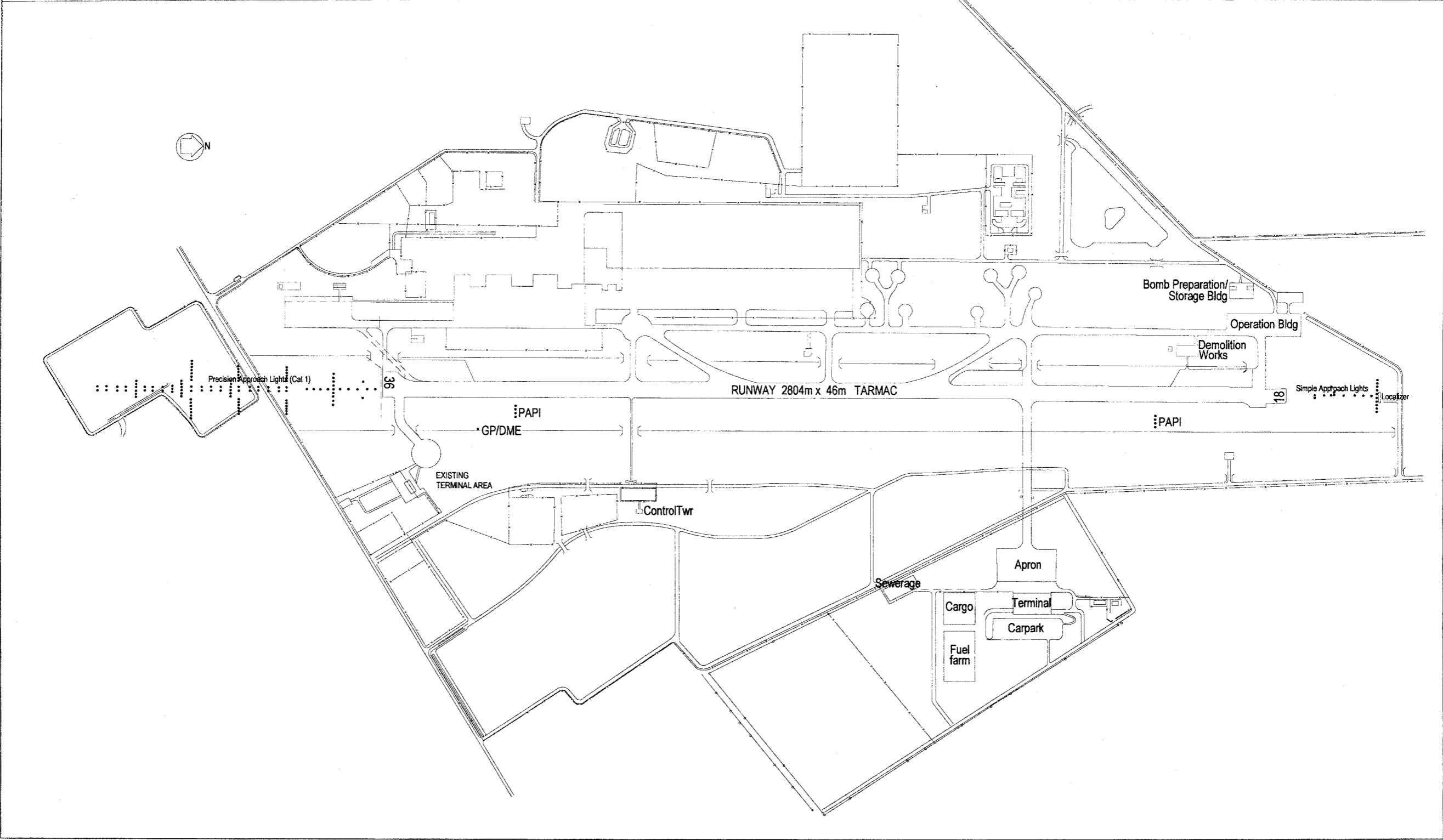
---

**WMKD AD 2.24 CHARTS RELATED TO KUANTAN AIRPORT**

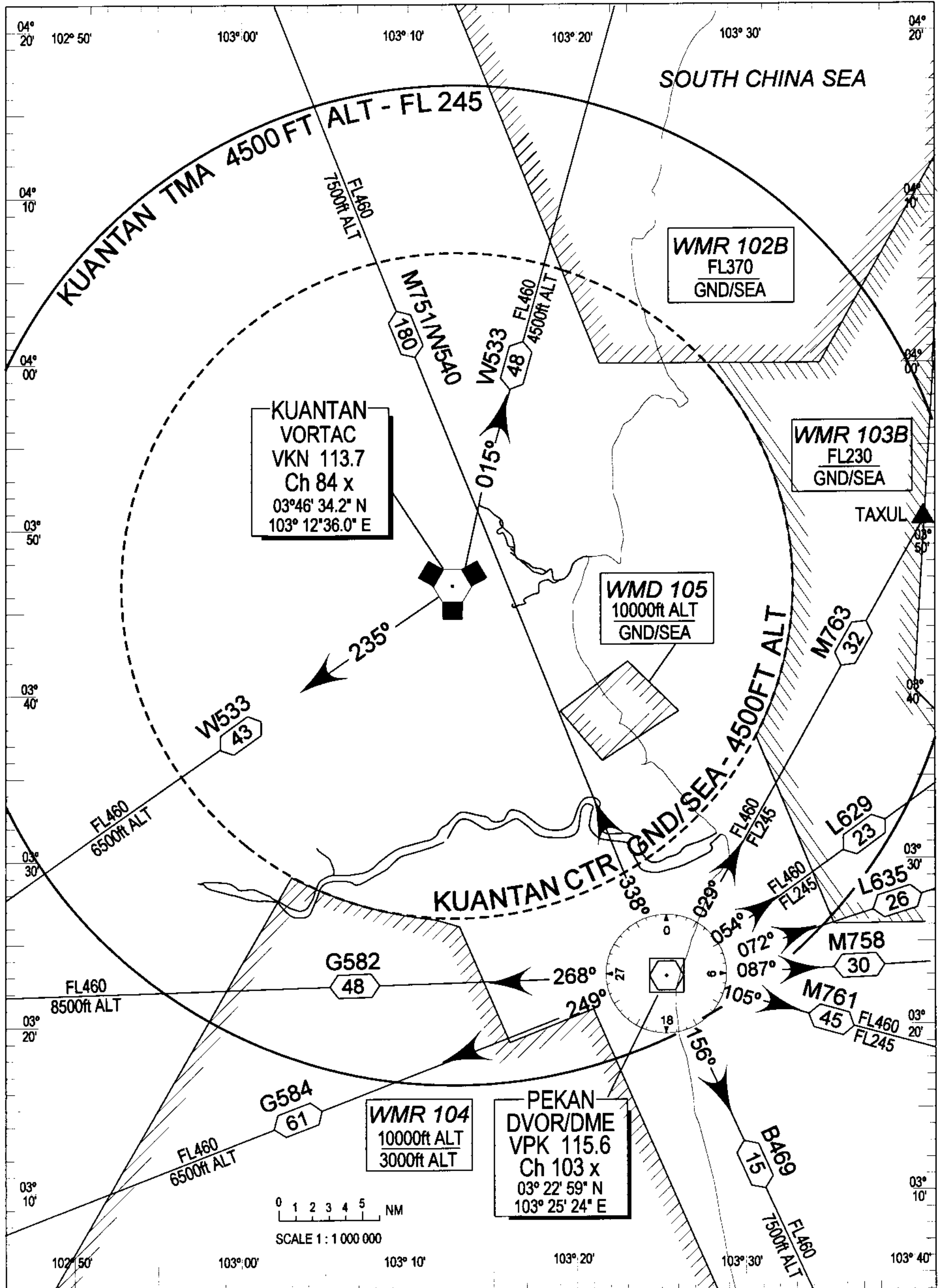
Chart Name	Page
AERODROME CHART - ICAO	WMKD AD 2 - 23
KUANTAN CONTROL ZONE	WMKD AD 2 - 47
STANDARD DEPARTURE CHART - INSTRUMENT - ICAO - DEPARTURES NORTH RWY 18/36	WMKD AD 2 - 51
STANDARD DEPARTURE CHART - INSTRUMENT - ICAO - DEPARTURES SOUTH RWY 18/36	WMKD AD 2 - 52
INSTRUMENT APPROACH CHART - ICAO - RWY 36 LOCATOR (Low Level)	WMKD AD 2 - 81
INSTRUMENT APPROACH CHART - ICAO - RWY 36 LOCATOR (High Level)	WMKD AD 2 - 83
INSTRUMENT APPROACH CHART - ICAO - RWY 18 HI/LO - TACAN 1	WMKD AD 2 - 85
INSTRUMENT APPROACH CHART - ICAO - RWY 36 HI/LO - TACAN 2	WMKD AD 2 - 87
INSTRUMENT APPROACH CHART - ICAO - RWY 36 HI/LO - TACAN 3	WMKD AD 2 - 89
INSTRUMENT APPROACH CHART - ICAO - RWY 18 HI/LO - TACAN 4	WMKD AD 2 - 91
INSTRUMENT APPROACH CHART - ICAO - RWY 36 ILS/DME, VOR/TAC ARC ILS/DME, LOCATOR/TAC ARC ILS/DME, LLZ/DME	WMKD AD 2 - 93
INSTRUMENT APPROACH CHART - ICAO - RWY 36 VOR/TAC ILS/DME, LLZ/DME	WMKD AD 2 - 95
INSTRUMENT APPROACH CHART - ICAO - RWY 36 LOCATOR ILS/DME, LLZ/DME	WMKD AD 2 - 97
INSTRUMENT APPROACH CHART - ICAO - RWY 18 VORTAC	WMKD AD 2 - 99

KUANTAN (RMAF)  
PENINSULAR MALAYSIA

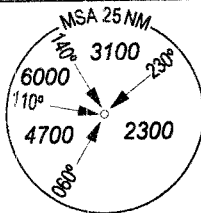
AERODROME HELIPORT CHART - ICAO



# KUANTAN CONTROL ZONE

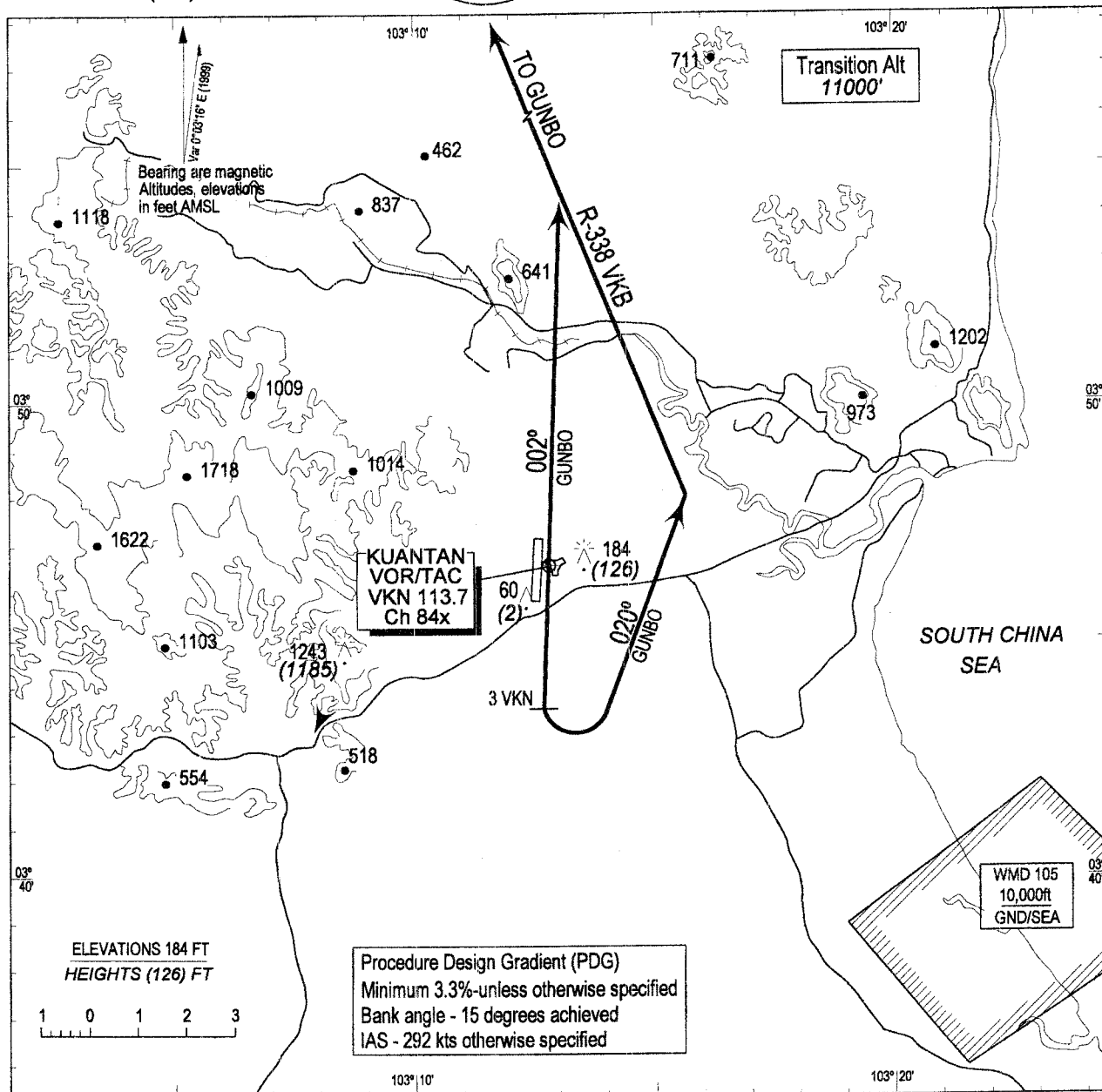


STANDARD DEPARTURE CHART  
INSTRUMENT (SID) - ICAO



APP: 119.7, 249.3  
TWR: 118.1, 238.1  
DIR: 261.6, 118.7  
SMC: 289.6, 120.4  
PAR: 293.0, 127.5

**KUANTAN /RMAF**  
PENINSULAR MALAYSIA  
**DEPARTURES NORTH**  
RWY 18/36



**DEPARTURES NORTH**

**RWY 18**

- \* PDG : for GUNBO : 4.1% to 8000ft - CTA
- \* Track 182°

**FOR GUNBO DEPARTURE**

- \* At 3DME VKN, Turn Left
- \* Track 020°
- \* Intercept R-338 outbound to GUNBO

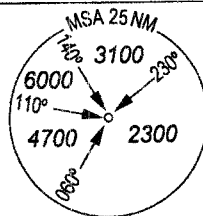
**RWY 36**

- \* PDG : for GUNBO : 4.5% to 8000ft - CTA
- \* Track 002°

**FOR GUNBO DEPARTURE**

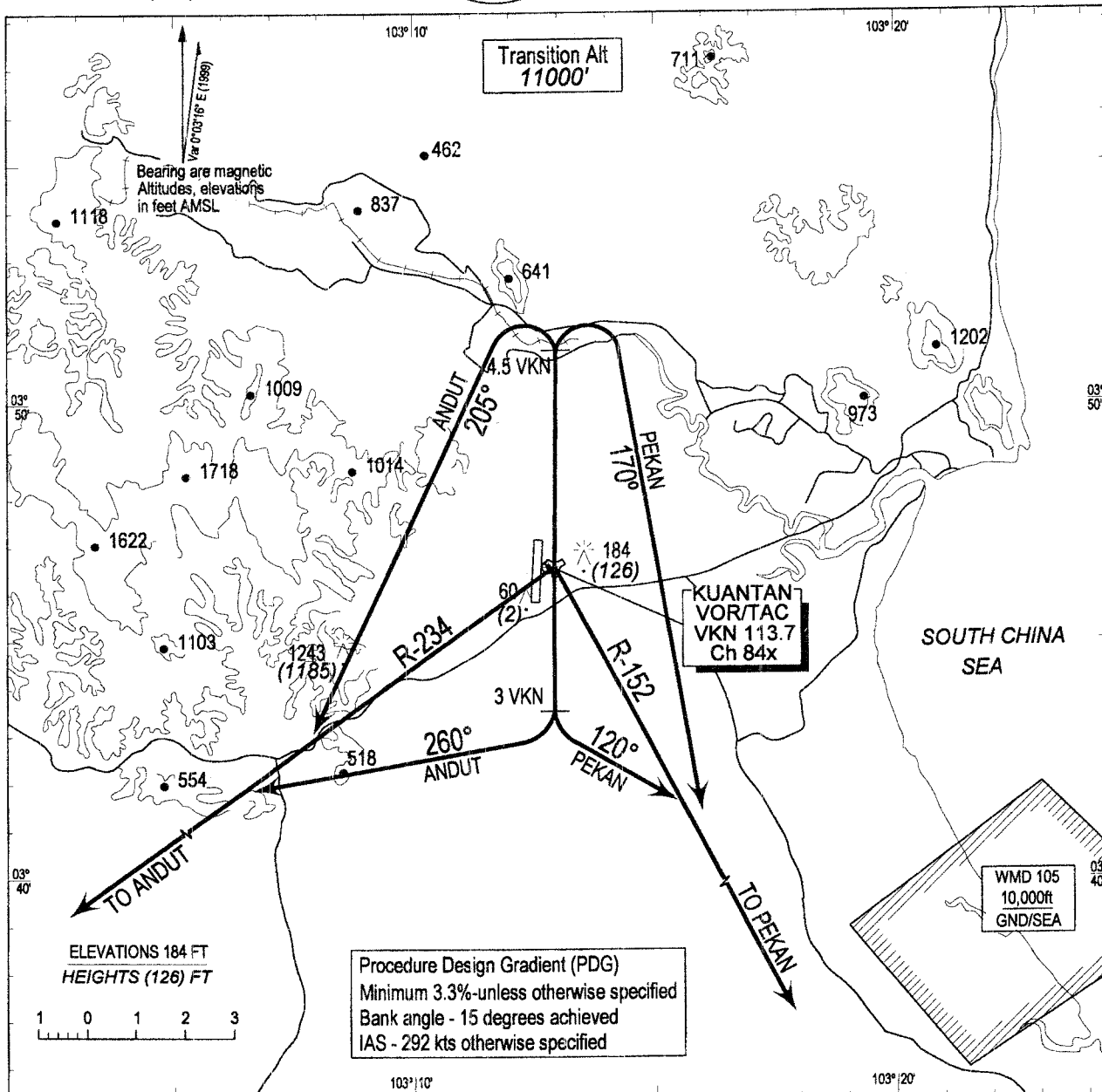
- \* Intercept R-338 VKB inbound to GUNBO

STANDARD DEPARTURE CHART  
INSTRUMENT (SID) - ICAO



APP: 119.7, 249.3  
TWR: 118.1, 238.1  
DIR: 261.6, 118.7  
SMC: 289.6, 120.4  
PAR: 293.0, 127.5

**KUANTAN /RMAF**  
PENINSULAR MALAYSIA  
**DEPARTURES SOUTH**  
RWY 18/36



**DEPARTURES SOUTH**

**RWY 18**

- \* PDG : for ANDUT : 3.9% to 7000ft - CTA  
: for PEKAN : 4.4% to 8000ft - CTA
- \* Track 182°

**FOR ANDUT DEPARTURE**

- \* At 3DME VKN, Turn Right
- \* Track 260°
- \* Intercept R-234 outbound to ANDUT

**FOR PEKAN DEPARTURE**

- \* At 3DME VKN, Turn Left
- \* Track 120°
- \* Intercept R-152 outbound to PK NDB

**RWY 36**

- \* PDG : for ANDUT : 4.5% to 2000ft - CTA  
: for PEKAN : 4.5% to 2000ft - CTA
- \* Track 002°

**FOR ANDUT DEPARTURE**

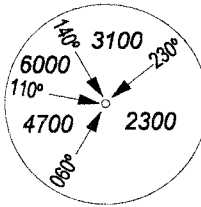
- \* At 4.5DME VKN or 1300ft, whichever is later
- \* Turn Left, Track 205°
- \* Intercept R-234 outbound to ANDUT

**FOR PEKAN DEPARTURE**

- \* At 4.5DME VKN or 1300ft, whichever is later
- \* Turn Right, Track 170°
- \* Intercept R-152 outbound to PK NDB

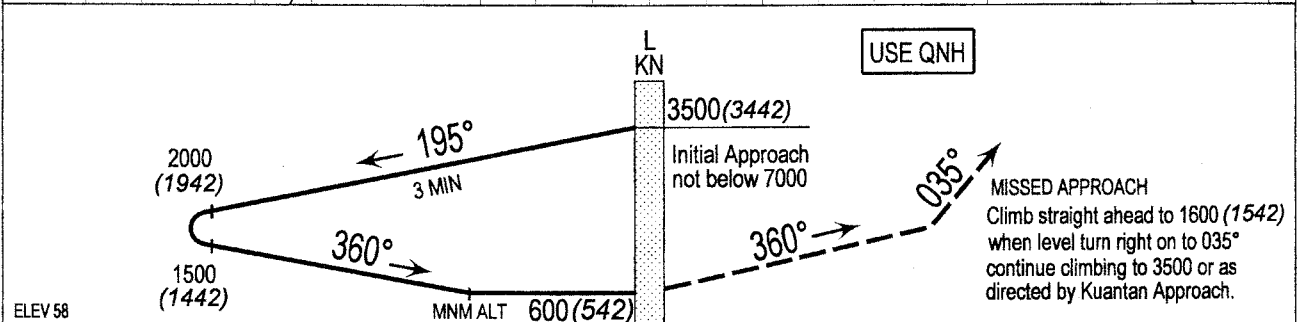
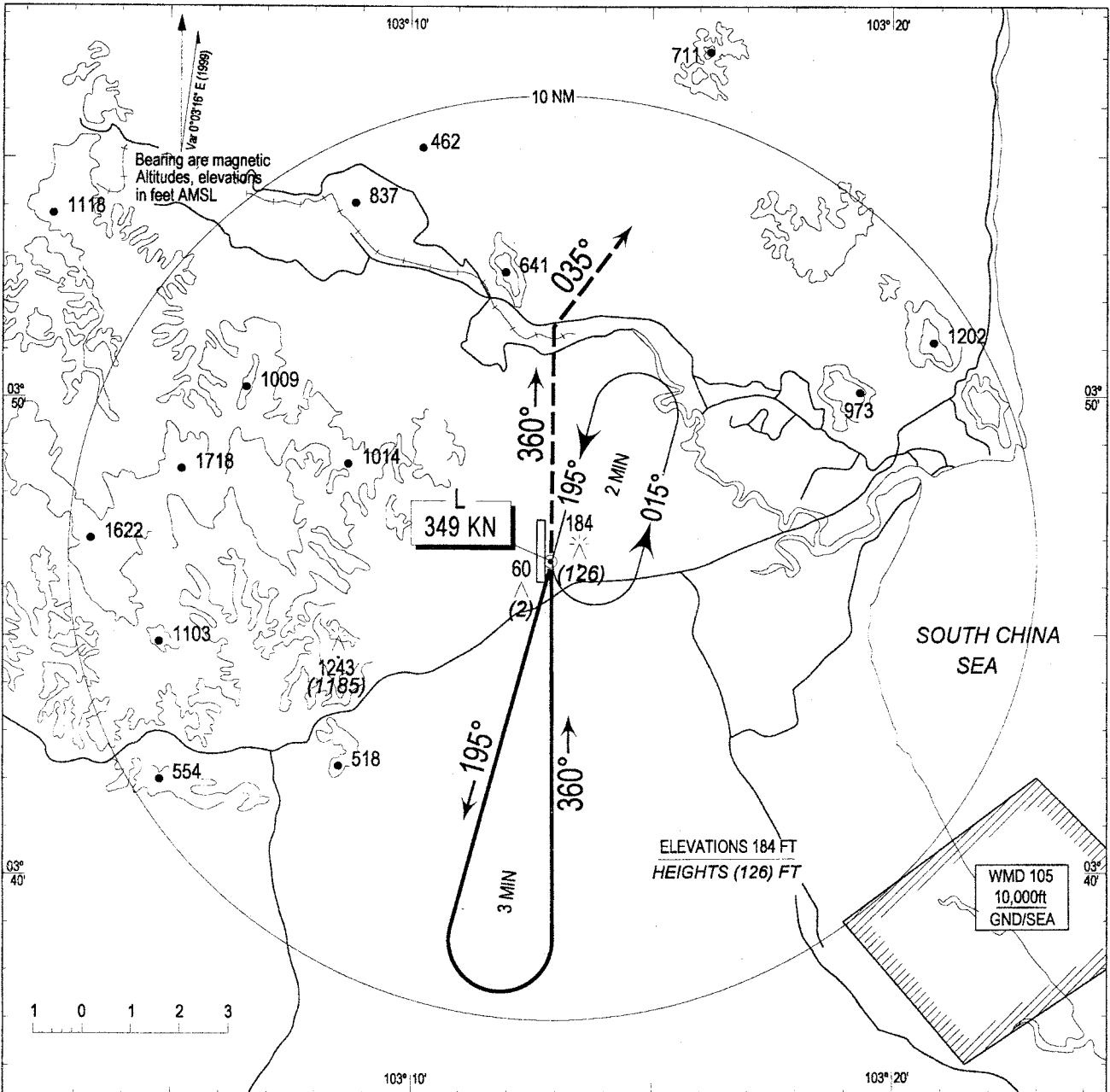
**INSTRUMENT  
APPROACH  
CHART - ICAO**

**AD ELEV 58ft**  
HEIGHTS RELATED TO  
THR RWY 36



APP: 119.7, 249.3  
TWR: 118.1, 238.1  
DIR: 261.6, 118.7  
GND: 289.6, 120.4  
PAR: 293.0, 127.5

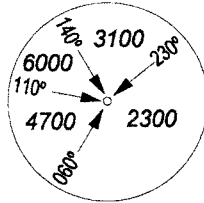
**KUANTAN /RMAF**  
PENINSULAR MALAYSIA  
**LOCATOR (LOW LEVEL)**  
RWY 36



CEILING AND VISIBILITY MINIMA			TIME TO THR OF RWY		FROM		DISTANCE		NM	
TAKE-OFF	DAY	NIGHT	90KT	120KT	150KT	180KT	210KT			
LANDING	DAY	NIGHT	MIN	SEC	MIN	SEC	MIN	SEC	MIN	SEC

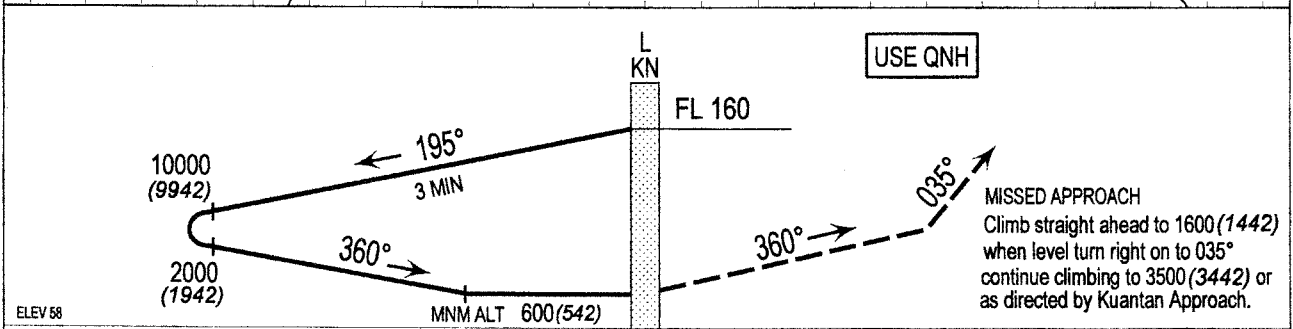
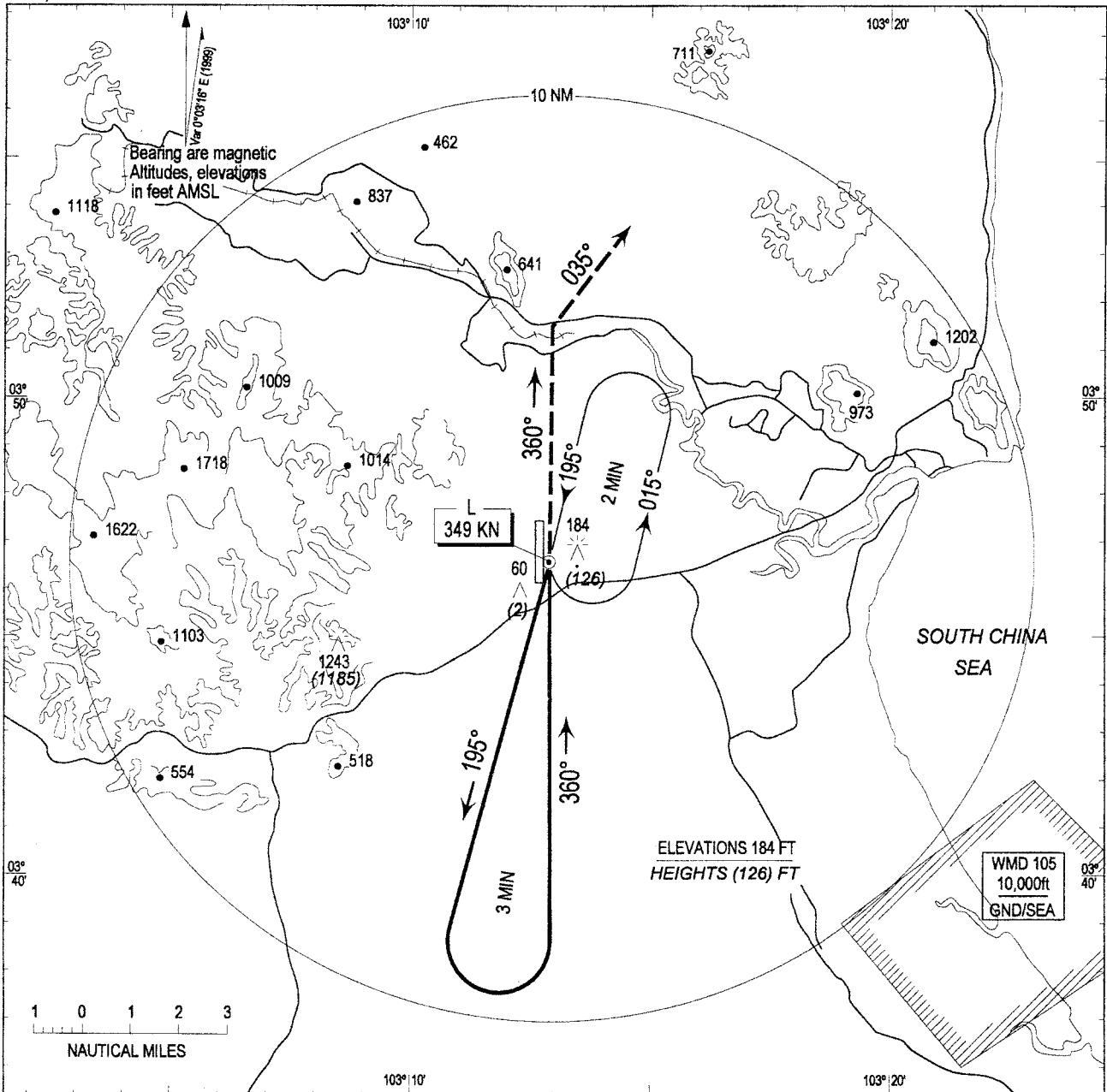
**INSTRUMENT  
APPROACH  
CHART - ICAO**

**AD ELEV 58ft**  
HEIGHT RELATED TO  
THR RWY 36



APP: 119.7, 249.3  
TWR: 118.1, 238.1  
DIR: 261.6, 118.7  
GND: 289.6, 120.4  
PAR: 293.0, 127.5

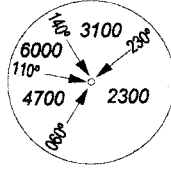
**KUANTAN /RMAF**  
PENINSULAR MALAYSIA  
**LOCATOR (HIGH LEVEL)**  
RWY 36



CEILING AND VISIBILITY MINIMA			TIME TO THR OF RWY		FROM		DISTANCE		NM	
TAKE-OFF	DAY	NIGHT	90KT	120KT	150KT	180KT	210KT			
LANDING	DAY	NIGHT	MIN	SEC	MIN	SEC	MIN	SEC	MIN	SEC

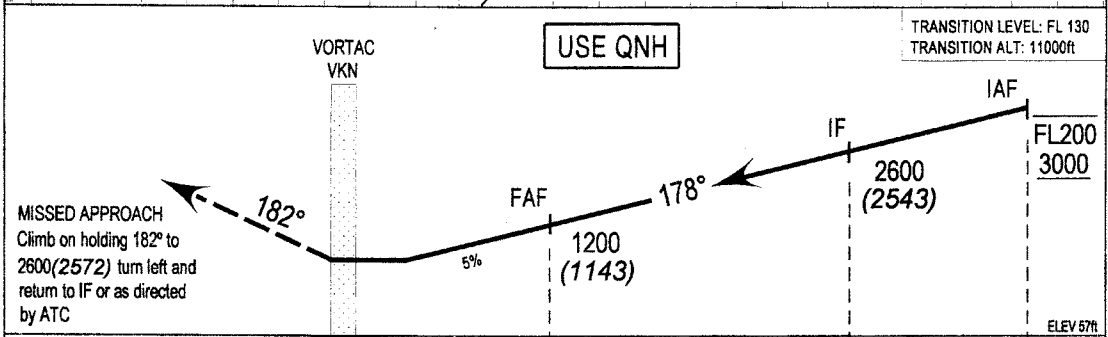
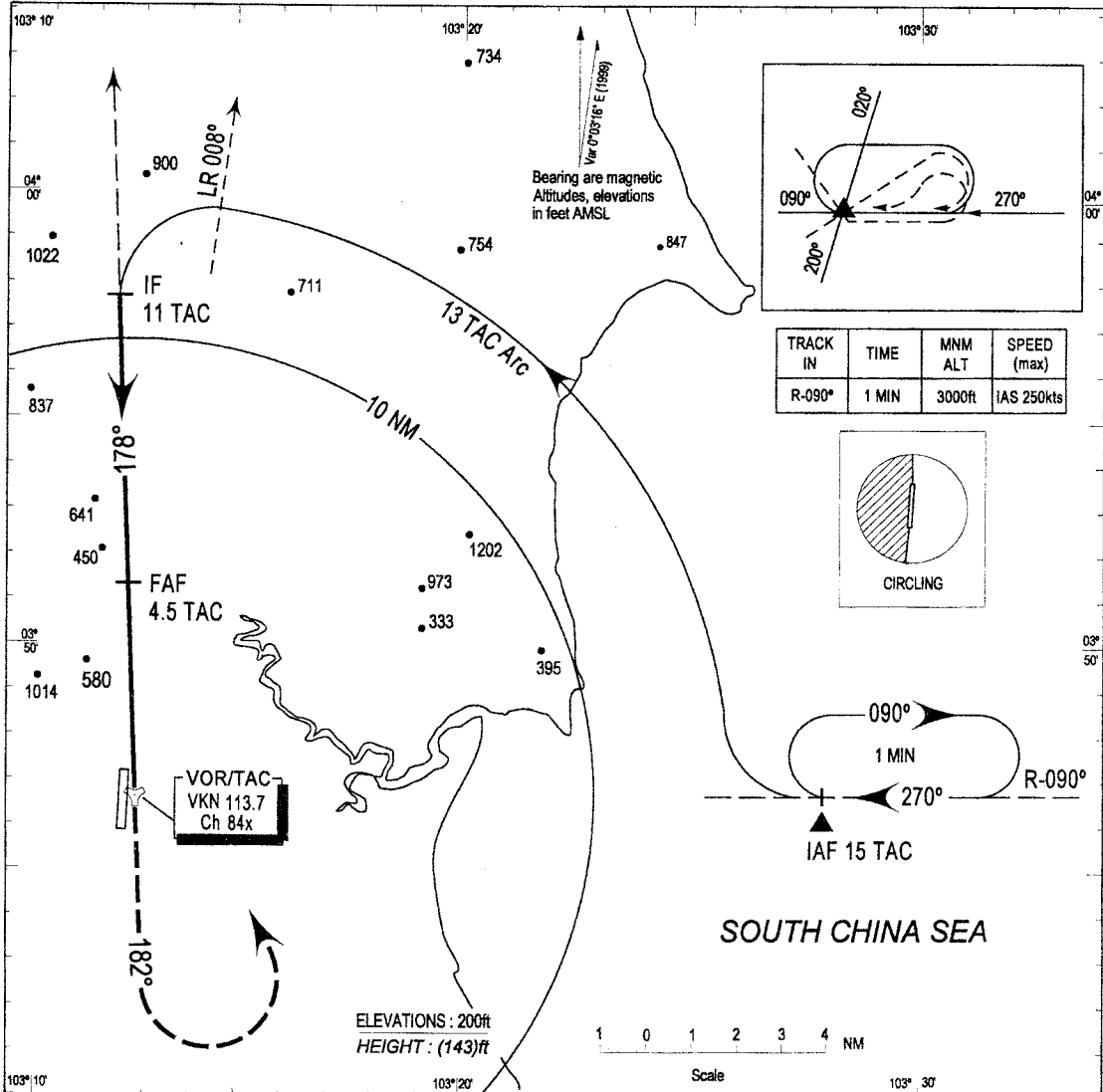
**INSTRUMENT  
APPROACH  
CHART - ICAO**

AD ELEV 58ft  
HEIGHTS RELATED TO  
THR RWY 18 - ELEV 57ft



APP: 119.7, 249.3  
TWR: 118.1, 238.1  
DIR: 261.6, 118.7  
GND: 289.6, 120.4  
PAR: 293.0, 127.5

**KUANTAN /RMAF**  
PENINSULAR MALAYSIA  
**TACAN 1 (HI/LO)**  
RWY 18

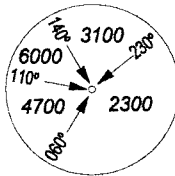


OCA (OCH)						Distance	4 DME	3 DME	2 DME				
Category of Aircraft	A	B	C	D	E	Altitude (height)	1070 (1013)	790 (733)	510 (453)				
Straight-in-Approach	630 (573)					Speed (knot)	90	120	150	180	210	240	
Circling	700 (643)	900 (843)	1500 (1443)	V V (ft/min)				395	525	650	785	915	1050
Caution : Circling is not authorised west of Rwy 18/36													



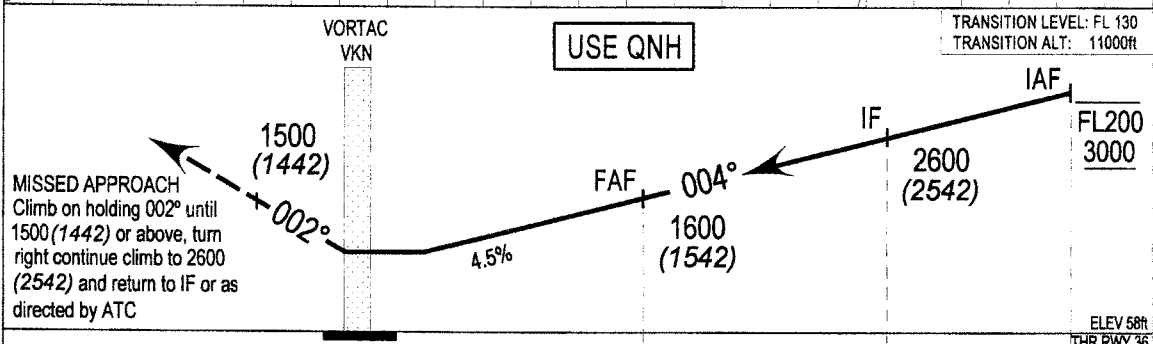
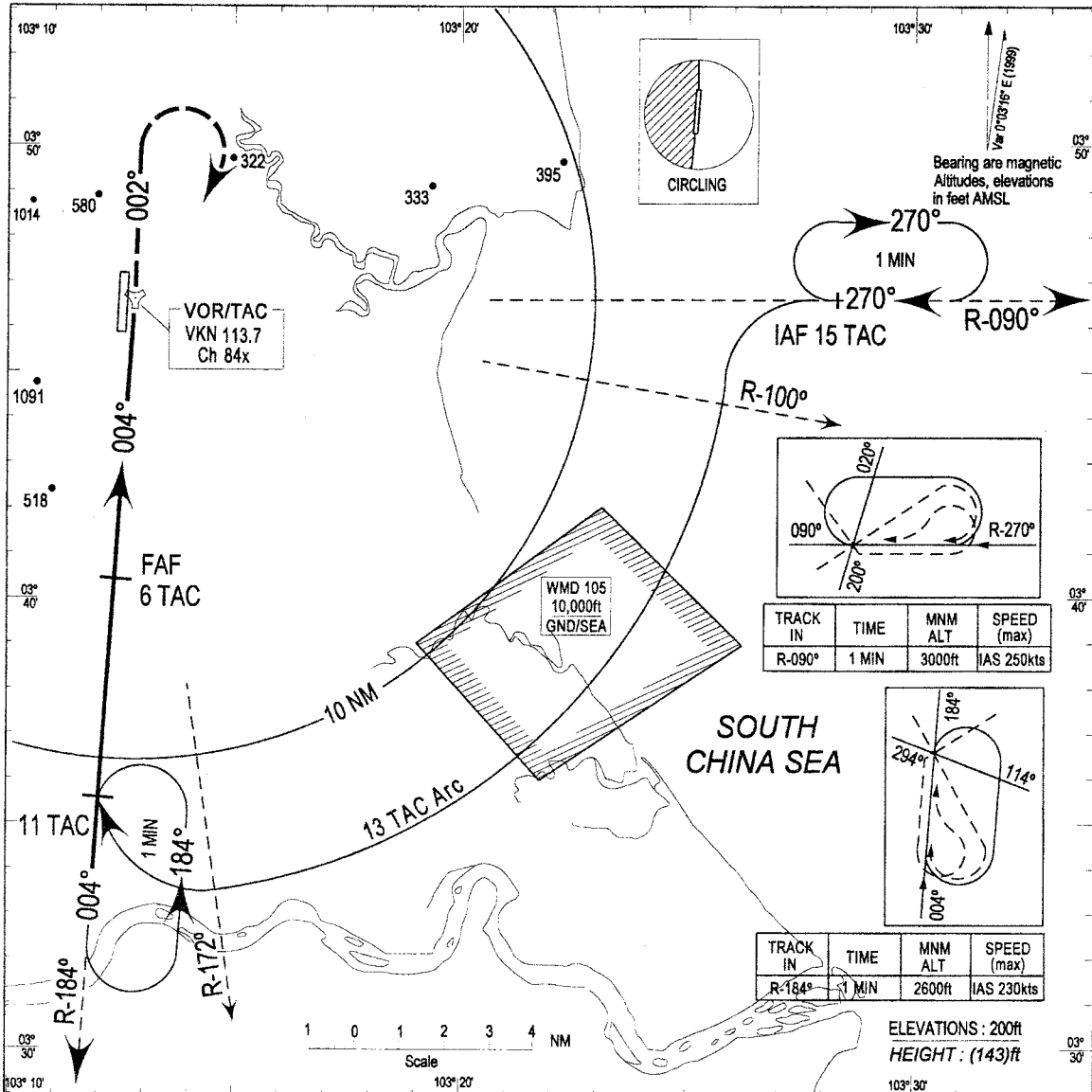
**INSTRUMENT  
APPROACH  
CHART - ICAO**

**AD ELEV 58ft**  
HEIGHT RELATED TO  
THR RWY 36 - ELEV 58ft



APP: 119.7, 249.3  
TWR: 118.1, 238.1  
DIR: 261.6, 118.7  
GND: 289.6, 120.4  
PAR: 293.0, 127.5

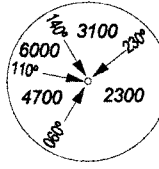
**KUANTAN /RMAF**  
PENINSULAR MALAYSIA  
**TACAN 2 (HI/LO)**  
RWY 36



OCA (OCH)						Distance	5 DME	4 DME	3 DME	2 DME		
Category of Aircraft	A	B	C	D	E	Altitude (height)	1230 (1172)	920 (862)	620 (562)	310 (252)		
Straight-in Approach	430 (372)					Speed (knot)	90	120	150	180	210	240
Circling	600 (542)	900 (842)	1500 (1442)									
Caution: Circling is not authorised west of Rwy 18/36						V V (ft/min)	460	610	760	915	1065	1220

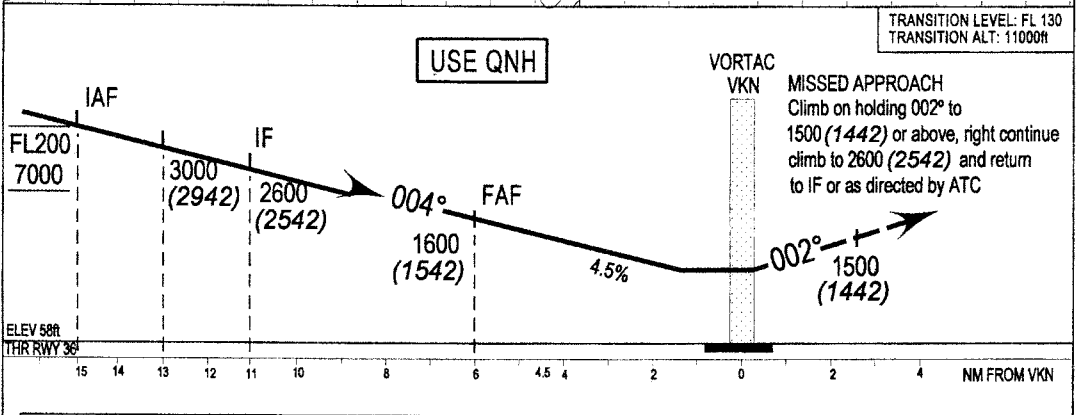
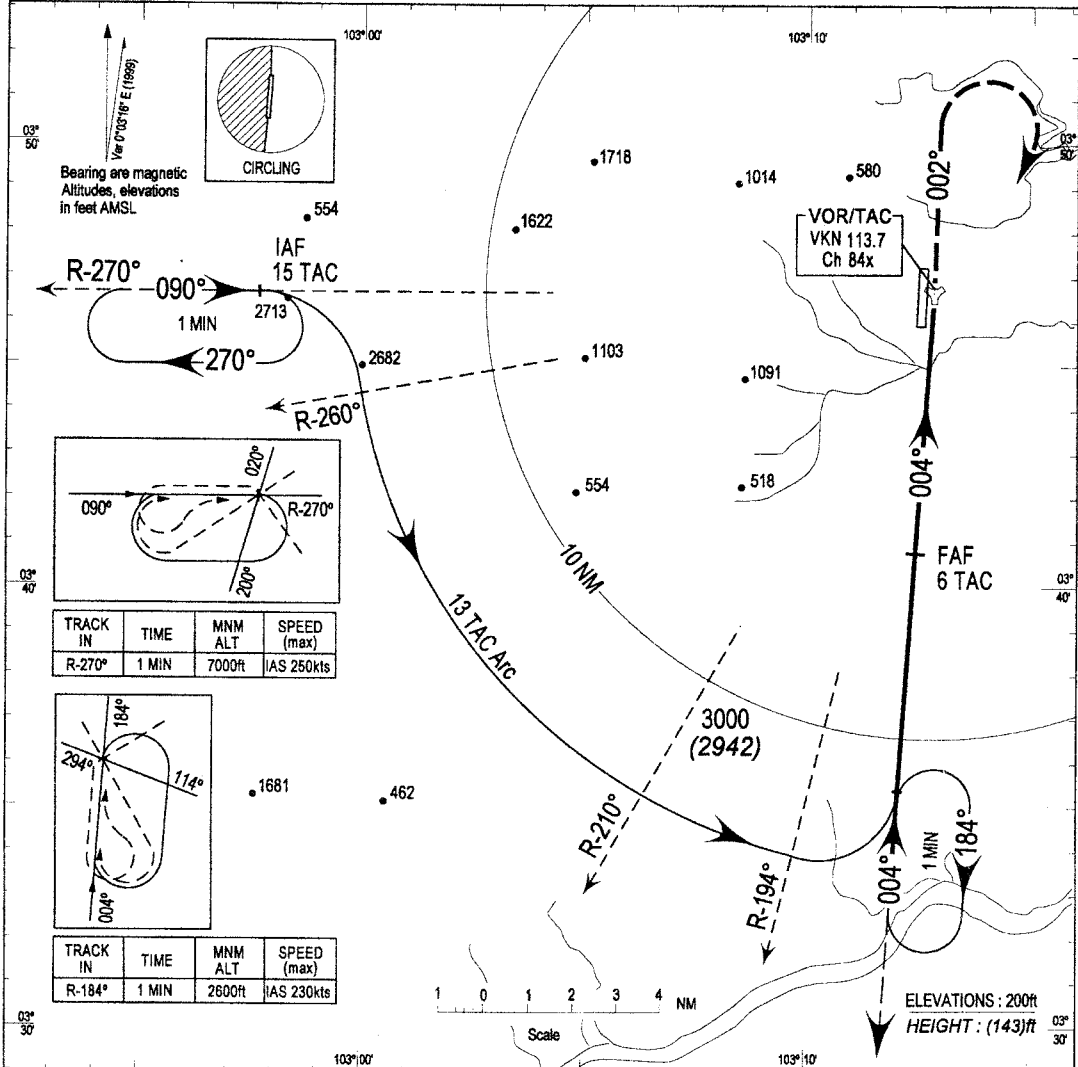
**INSTRUMENT  
APPROACH  
CHART - ICAO**

AD ELEV 58ft  
HEIGHT RELATED TO  
THR RWY 36



APP: 119.7, 249.3  
TWR: 118.1, 238.1  
DIR: 261.6, 118.7  
GND: 289.6, 120.4  
PAR: 293.0, 127.5

**KUANTAN /RMAF**  
PENINSULAR MALAYSIA  
**TACAN 3 (HI/LO)**  
RWY 36



OCA (OCH)						Distance	5 DME	4 DME	3 DME	2 DME		
Category of Aircraft	A	B	C	D	E	Altitude (height)	1230 (1172)	920 (862)	620 (562)	310 (252)		
Straight-in-Approach	430 (372)					Speed (knot)	90	120	150	180	210	240
Circling	600 (542)	900 (842)	1500 (1442)			V V (ft/min)	460	610	760	915	1065	1220
Caution : Circling is not authorised west of Rwy 18/36												

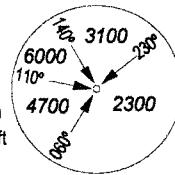


**KUANTAN**  
PENINSULAR MALAYSIA

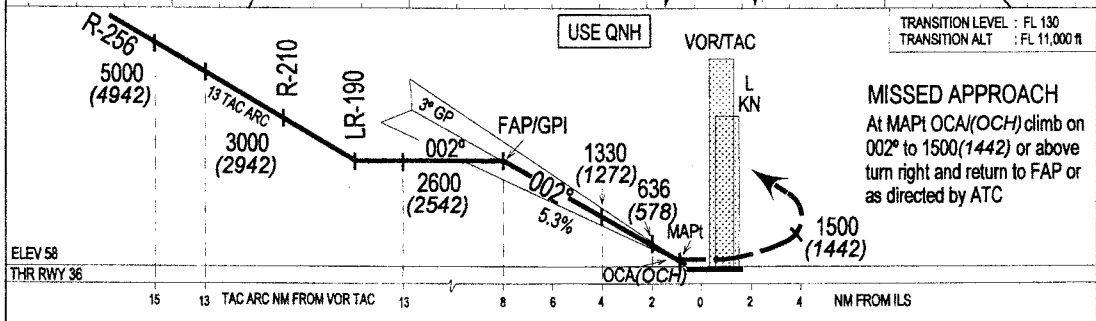
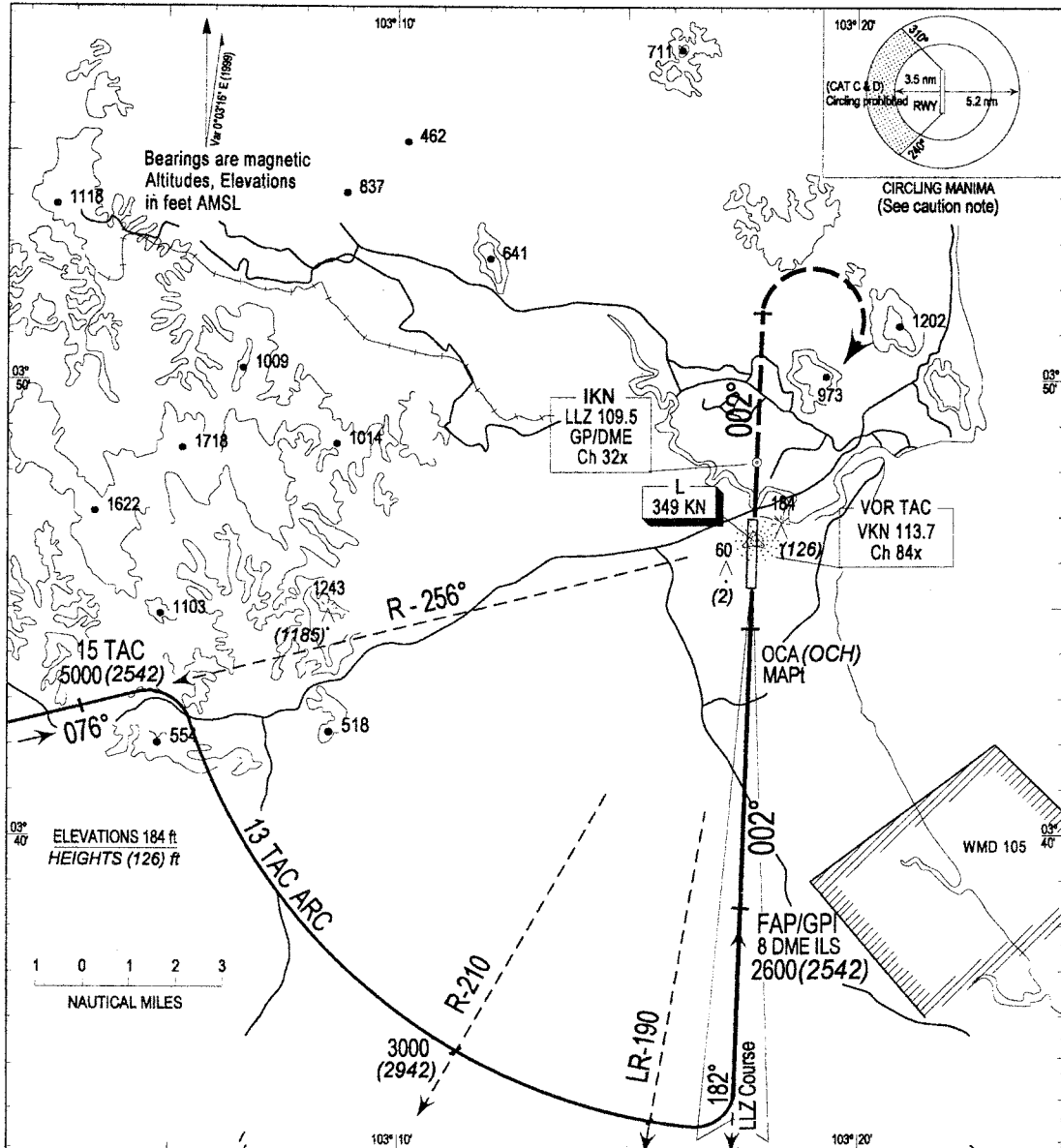
ILS/DME  
VOR TAC Arc ILS/DME  
LOCATOR TAC Arc ILS/DME  
LLZ/DME  
RWY 36

**INSTRUMENT  
APPROACH  
CHART - ICAO**

ELEV 58ft  
HEIGHTS RELATED TO  
THR RWY 36 - ELEV 58ft  
ILS REF DATUM 54ft



APP: 119.7, 249.3  
TWR: 118.1, 238.1  
DIR: 261.6, 118.7  
GND: 289.6, 120.4  
PAR: 293.0, 127.5



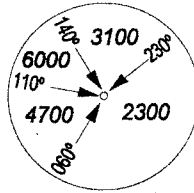
OCA(OCH)						
Cat. of Aircraft	A	B	C	D		
Cat. 1 (P. alt.)	260 (202)	270 (212)	280 (222)	290 (232)		
LLZ/DME	290 (232) 0.7 DME ILS					
Circling	600 (542)	900 (842)	1100 (1042)			
Visibility	1.0 NM	1.5 NM	2.0 NM	2.5 NM		
TIME TO THR RWY 36 FROM FAP DIST 7.8 NM						
Ground Speed (kts)	70	90	120	150	180	210
Min : Sec	6:30	5:12	3:55	3:07	2:36	2:13
3° (5.3%) descend (ft/min)	392	490	654	817	981	1143

CAUTION : CIRCLING PROHIBITED IN IN SECTOR 240° - 310° BEYOND 3.5 NM FROM THR RWY 36 & THR RWY 18



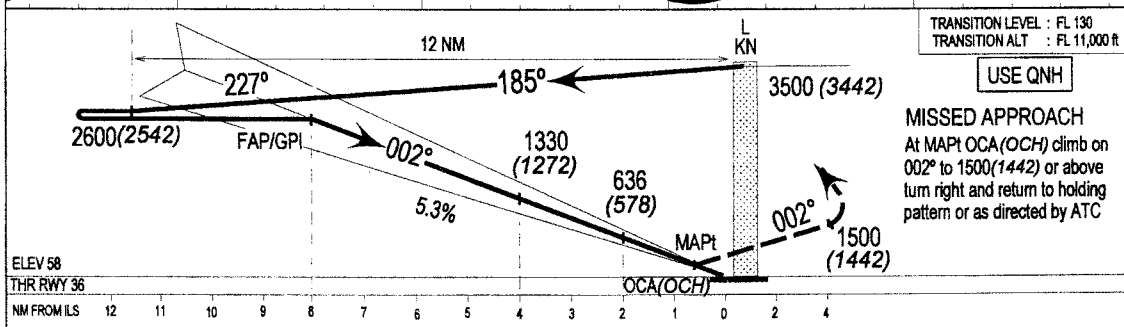
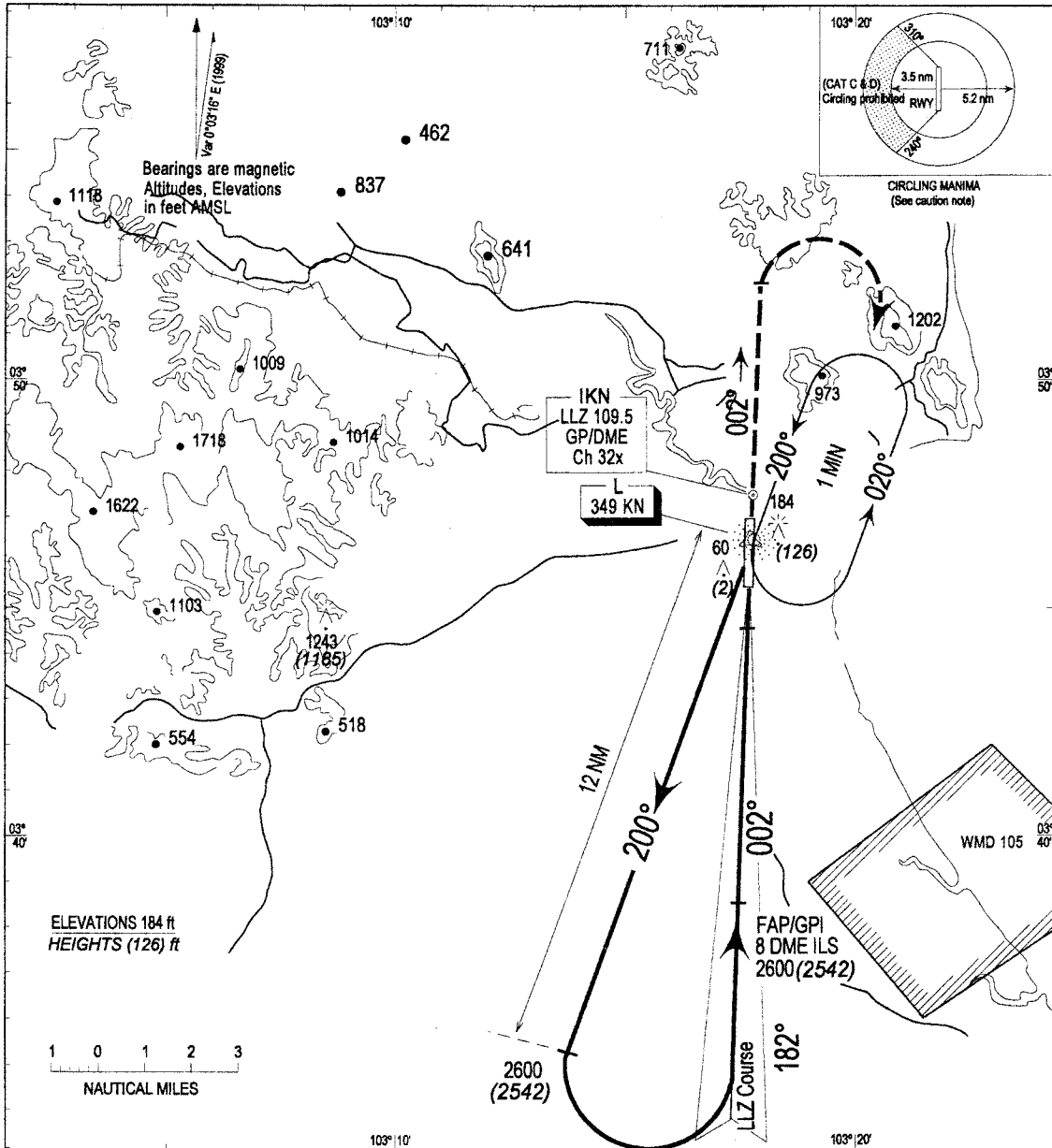
**INSTRUMENT  
APPROACH  
CHART - ICAO**

**ELEV 58ft**  
HEIGHTS RELATED TO  
THR RWY 36 - ELEV 58ft  
ILS REF DATUM 54ft



APP: 119.7, 249.3  
TWR: 118.1, 238.1  
DIR: 261.6, 118.7  
GND: 289.6, 120.4  
PAR: 293.0, 127.5

**KUANTAN**  
PENINSULAR MALAYSIA  
**LOCATOR/DME  
LLZ/DME  
RWY 36**



OCA (OCH)					
Cat. of Aircraft	A	B	C	D	
Cat. 1 (P. alt.)	260 (202)	270 (212)	280 (222)	290 (232)	
LLZ/DME	290 (232) /0.7 DME ILS				
Circling	600 (542)	900 (842)	1100 (1042)		
Visibility	1.0 NM	1.5 NM	2.0 NM	2.5 NM	
Ground Speed (kts)	70	90	120	150	180
Time from L to P turn dist 12 nm	10:20	8:00	6:00	4:49	3:25
Min : Sec FAP to thr Rwy 36	6:30	5:12	3:55	3:07	2:36
3° (5.3%) descend (ft/min)	392	490	654	817	981

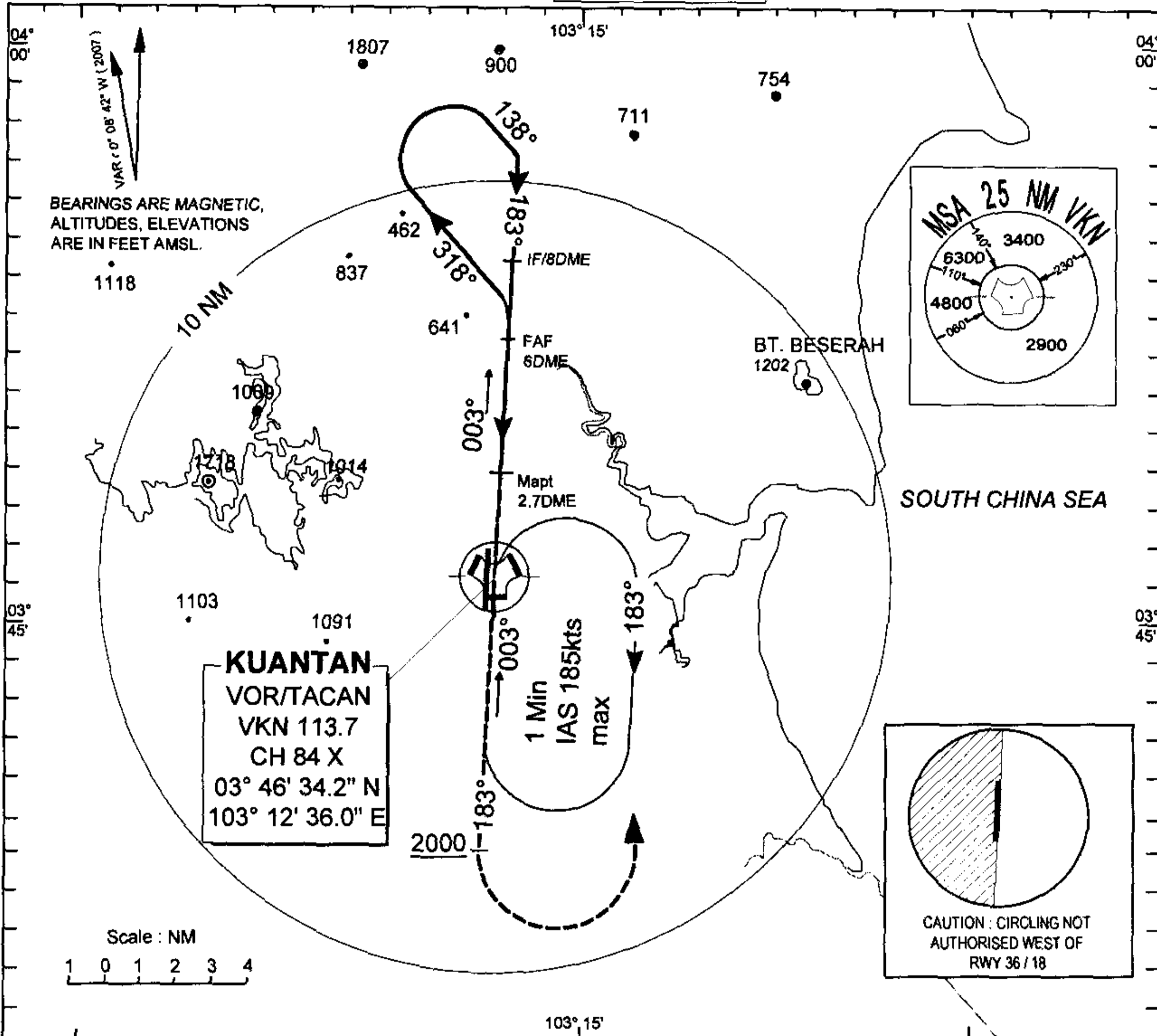
CAUTION : CIRCLING PROHIBITED IN IN SECTOR 240° - 310° BEYOND 3.5 NM FROM THR RWY 36 & THR RWY 18

**INSTRUMENT  
APPROACH  
CHART- ICAO**

AD. ELEV. 58 FT  
HEIGHTS RELATED TO  
THR RWY18 ELEV. 57 FT

APP - 119.7 , 249.3  
TWR - 118.1 , 238.1  
SMC - 289.6 , 120.4  
DIR - 261.6 , 118.7  
PAR - 293.0 , 127.5

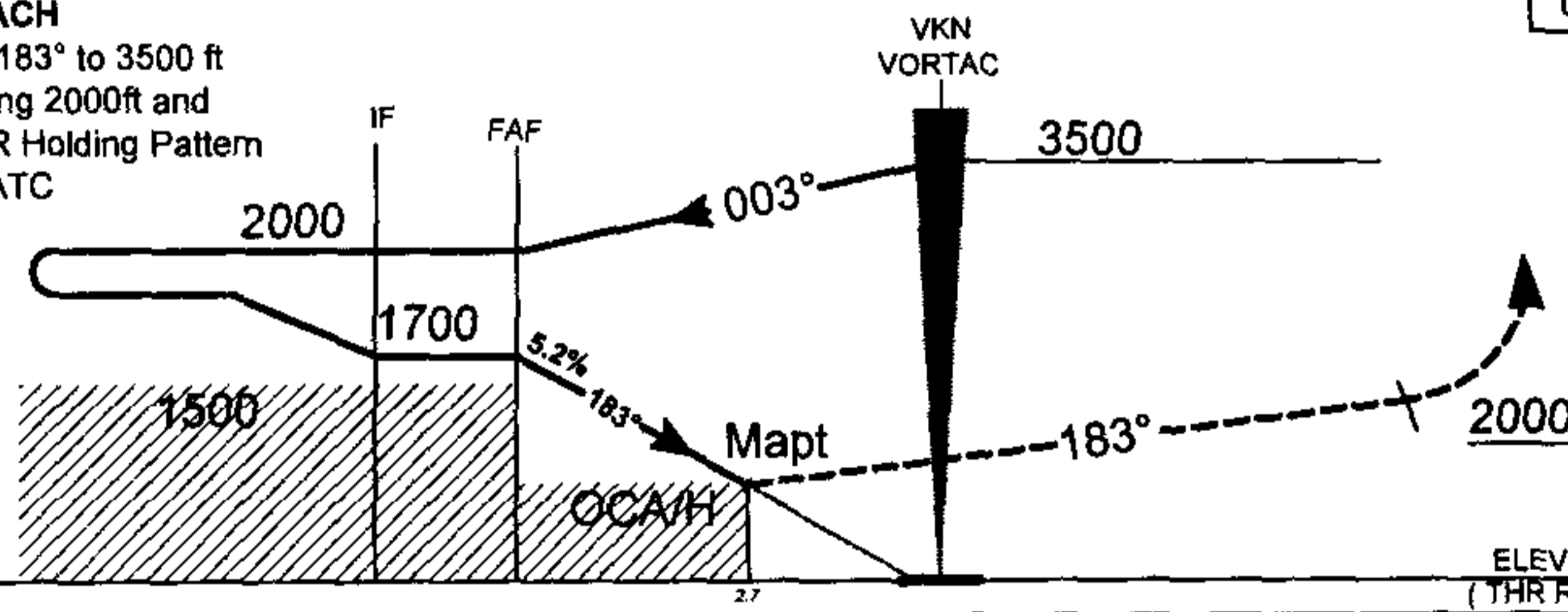
**KUANTAN / SULTAN AHMAD SHAH  
VORTAC  
RWY18**



**MISSED APPROACH**

At Mapt Climb on 183° to 3500 ft  
Turn Left on passing 2000ft and  
return to VKN VOR Holding Pattern  
or as directed by ATC

Used QNH



ELEV. 57 FT  
(THR RWY 18)

OCA/H (FT)					
ACFT CATEGORY	A	B	C	D	
STRAIGHT-IN APCH	660				
CIRCLING (FT/vis.)	970 / 1.9 NM	970 / 2.8 NM	1800 / 3.79 NM	1800 / 4.6 NM	
CAUTION : CIRCLING NOT AUTHORISED WEST OF RWY 36 / 18					
ALT VS DME DIST TO THR RWY18					
DME	6	5	4	3	2.7
ALT(FT)	1750	1430	1110	770	660
GS (KTS)	70	90	120	150	180
3° Desc. (FT/Min)	370	480	640	800	960